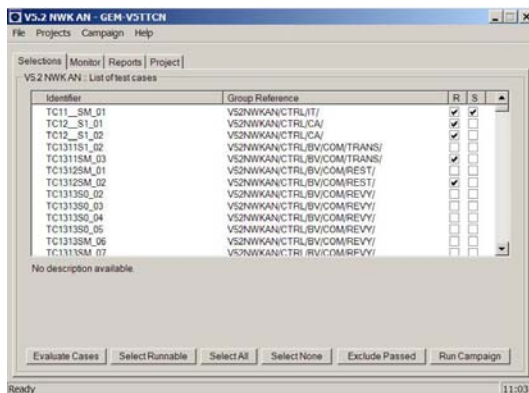


GEM-V5TTCN

GEM-V5TTCN is a protocol tester for ensuring Local Exchange (LE) and Access Network (AN) conformance to the ETSI V5 series of documents. Equipment manufacturers can use GEM-V5TTCN to demonstrate conformance against the ETSI V5 specifications. Telecom service providers can use GEM-V5TTCN to prove out vendor equipment prior to deployment in their network.



Features:

- Runs on desktop or laptop hardware running Microsoft Windows™ operating system.
- Works in conjunction with GEM-RDTest and GEM-Analyze.
- Provides Tree and Tabular Combined Notation (TTCN) automated test suites (ATS) for the following ETSI specifications:
 - o EN 300 324-4 – V5.1 AN network layer.
 - o EN 300 324-6 – V5.1 LE network layer.
 - o EN 300 324-8 – V5.1 data link layer.
 - o EN 300 347-4 – V5.2 AN network layer.
 - o EN 300 347-6 – V5.2 LE network layer.
 - o EN 300 347-8 – V5.2 data link layer.
- Powered by OpenTTCN, a leading product in the TTCN testing industry.

- GUI for managing test suite execution. GUI provides the following options:
 - o Evaluate valid test cases based on the V5 configuration.
 - o Selection of all, valid, or individual test cases to run.
 - o Real-time monitoring of currently running test.
 - o Reporting of results from current and previously run test suites.
- Test case log files simplify the identification of failure points.
- Automatic marking of GEM-Analyze trace at the start and end of each test case aids in the debug of failed test cases.
- Automated interfaces streamline the running of test suites minimizing user interactions.
- EDI provides professional service packages that can help setup of GEM-V5TTCN within a user's test program, and execute and analyze the results.

