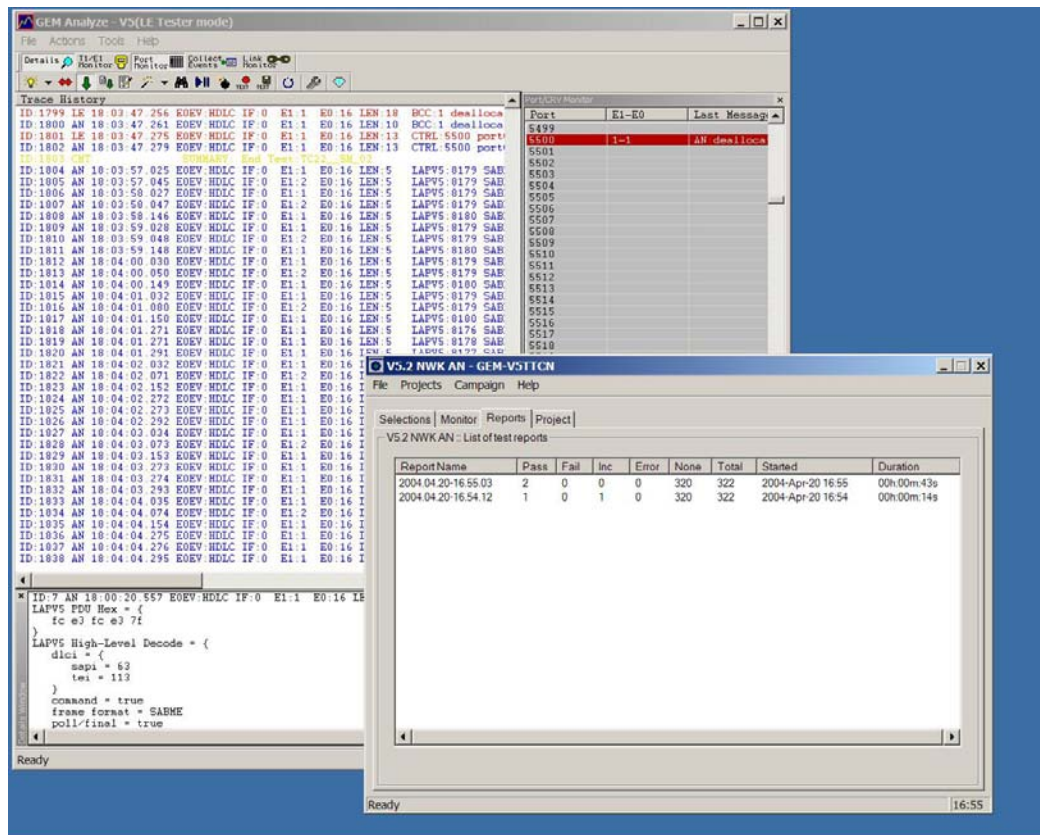


Experience makes the difference!

EDI Enterprises Inc.

Outsource Your Testing!

- ❖ TTCN-3 test components & services.
- ❖ You provide us with your requirements document.
- ❖ We provide you with an automated, real-time test suite.
 - Example application: TTCN suite for testing telecom equipment.



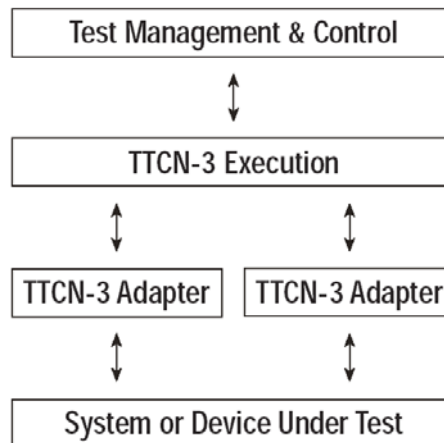
www.edienterprises.com

EDI Enterprises, Inc.
5100 Thimsen Avenue, Suite 1
Minnetonka, MN 55345
U.S.A.

Phone (US): 888-924-2754
Phone (US): 952-401-8912
Fax: 952-400-6202
Email: info@edienterprises.com

TTCN 3 Summary

- ❖ TTCN-3 (Testing and Test Control Notation Version 3) is a standardized testing language and test system architecture defined jointly by the ETSI and ITU standards organizations.



- ❖ Compliant with ISO/IEC 9646 (Testing Methodology and Framework) as well as ISO/IEC 9001 (Quality Management).
- ❖ Allows the automation of test programs based on suites of test cases.
- ❖ Provides high-level, testing-oriented constructs that can be used to specify new test cases as needed:
 - Send, receive, alternative, call, replay, timeout, component, port, message, timer, etc.
- ❖ Allows definition of Modules that are re-usable within and between projects.
- ❖ Integrates easily with a wide range of systems under test: medical, telecom, automotive, industrial, etc.

EDI provides components and professional services to help in the development of TTCN-3-based or custom test systems. EDI can help in the definition, implementation, and automation of your testing needs.

www.edienterprises.com

EDI Enterprises, Inc.
5100 Thimsen Avenue, Suite 1
Minnetonka, MN 55345
U.S.A.

Phone (US): 888-924-2754
Phone (US): 952-401-8912
Fax: 952-400-6202
Email: info@edienterprises.com